



HM Revenue
& Customs

GVMS Customer Journeys

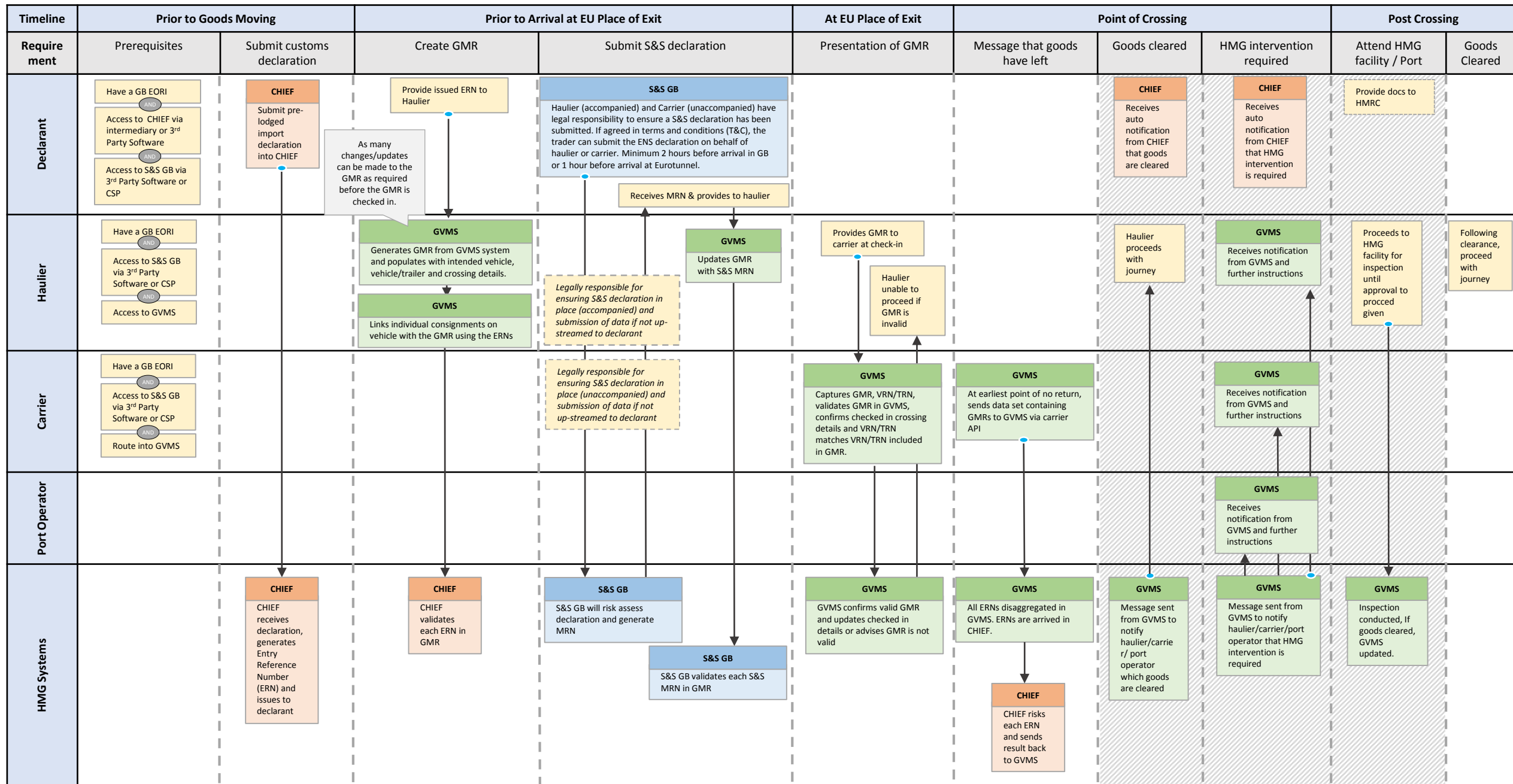
EU>GB and GB>EU

Introduction

The slides in this pack set out customer journeys for goods using the Goods Vehicle Movement Service (GVMS). They are designed to support software developers, ports, carriers and other delivery partners in implementing the GVMS.

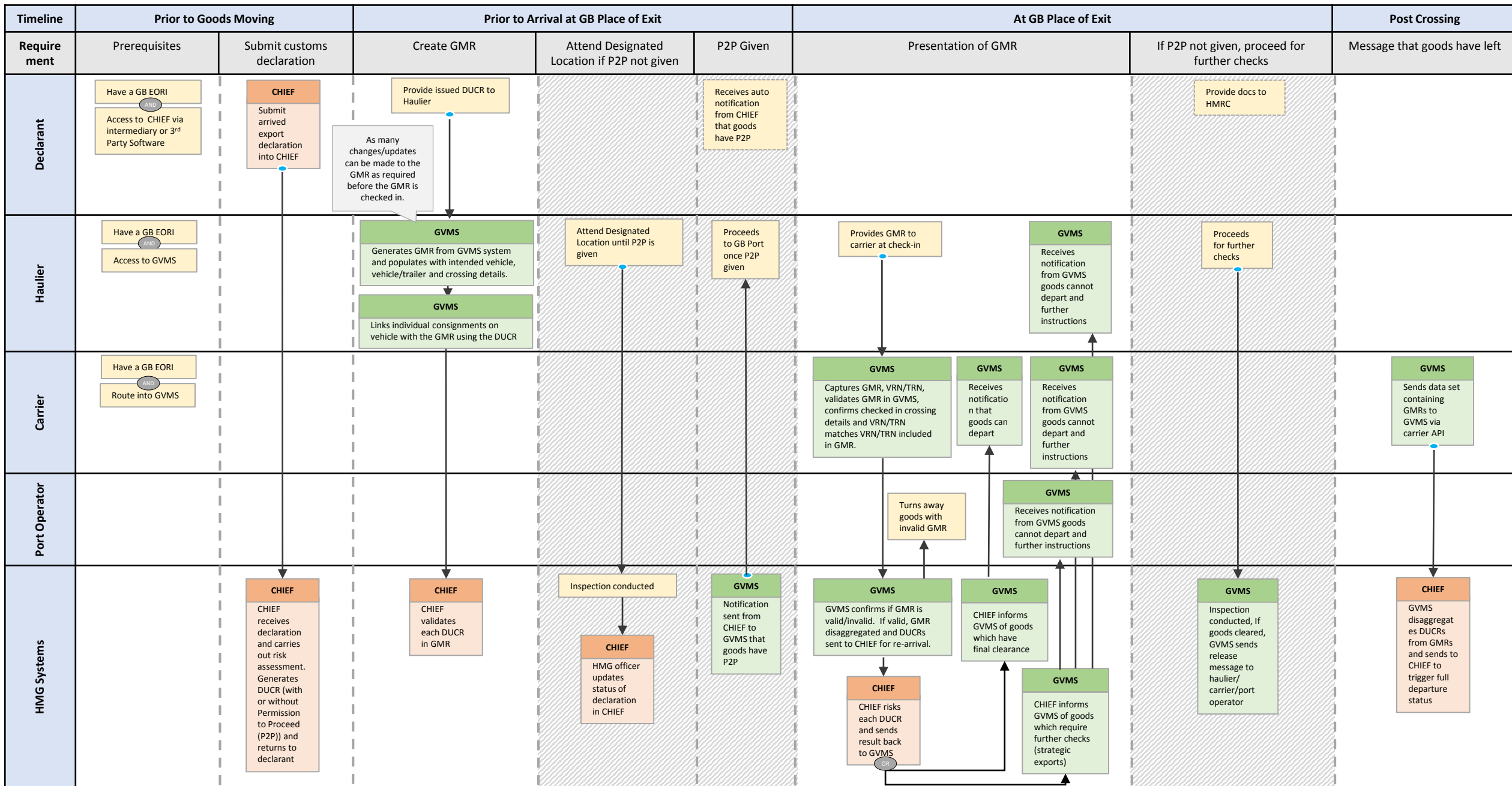
The journeys set out the processes and systems interactions required as a result of UK import and export requirements. These slides do not detail the additional processes that businesses and operators will have to implement to meet EU import and export requirements.

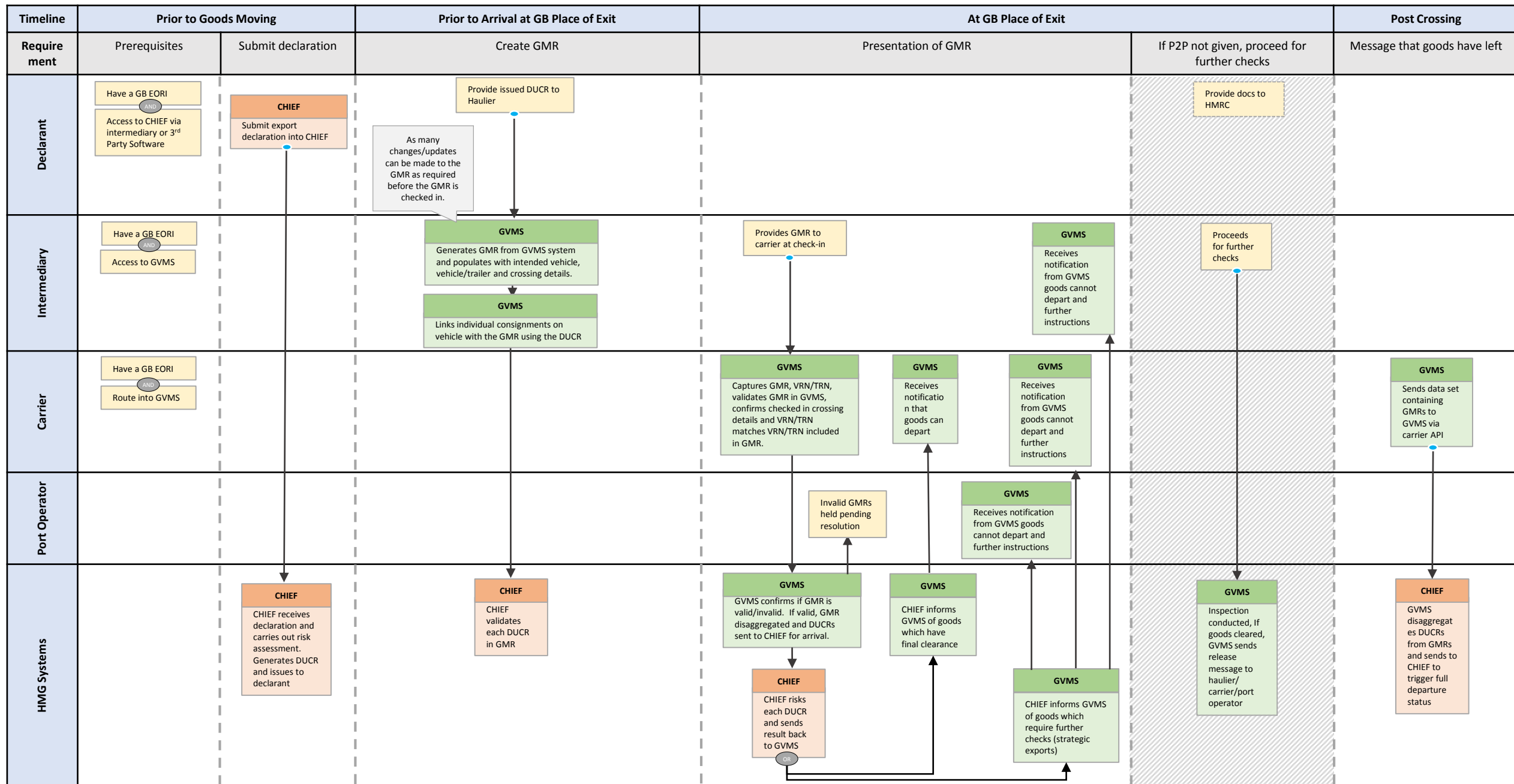
HMG has published details about the staged approach to introducing full controls at the UK border from January 2021. These journeys are the processes at the end of that period, in July 2021.



KEY: **GVMS** **CHIEF** **S&S GB** **OTHER**

OFFICIAL-SENSITIVE • Highlights first action involved in key requirement





KEY: GVMS CHIEF OTHER

OFFICIAL-SENSITIVE • Highlights first action involved in key requirement